

SECURITY



DIGITAL AUDIENCE PROFILE

ADVERTISE WITH *SECURITY*

Security Magazine is uniquely focused on solutions for enterprise security leaders. It is designed and written for business-minded executives who manage enterprise risk and security. *Security* provides management-focused features, opinions and trends for leaders in business, government and institutional sectors in person and online.

www.securitymagazine.com



550 W Merrill St, Suite 200, Birmingham, MI 48009

Copyright © 2026 BNP Media, All Rights Reserved.

**BNP Media Inc.**

Birmingham, MI

Alliance for Audited Media has reviewed the BNP Media audience and media management technology platform and Digital Audience Profile reporting solution for conformance to generally accepted information security management and reporting standards.

Our examination was performed in accordance with generally accepted information security management and reporting standards. Our examination included reviews of Platform Technology, Data Life Cycle Management, System Monitoring, Access Controls, Software Development Life Cycle, Media Production, Media Distribution, Audience Data, Documentation, Reporting, and Disclosures. The examination included those procedures we considered necessary in the circumstances to obtain a reasonable basis for rendering our opinion.

Based on our review, we are not aware of any material modifications that should be made to the BNP Media audience and media management platform and Digital Audience Profile reporting solution for recording, processing, and reporting audience and media data.

The accreditation of the BNP Media audience and media management technology platform and Digital Audience Profile reporting solution is as of December 31, 2023.

This report is intended solely for use by the management of BNP Media and its customers.

Alliance for Audited Media

Alliance for Audited Media

March 31, 2024



Audience Profile

SECURITY serves risk management and security leaders.

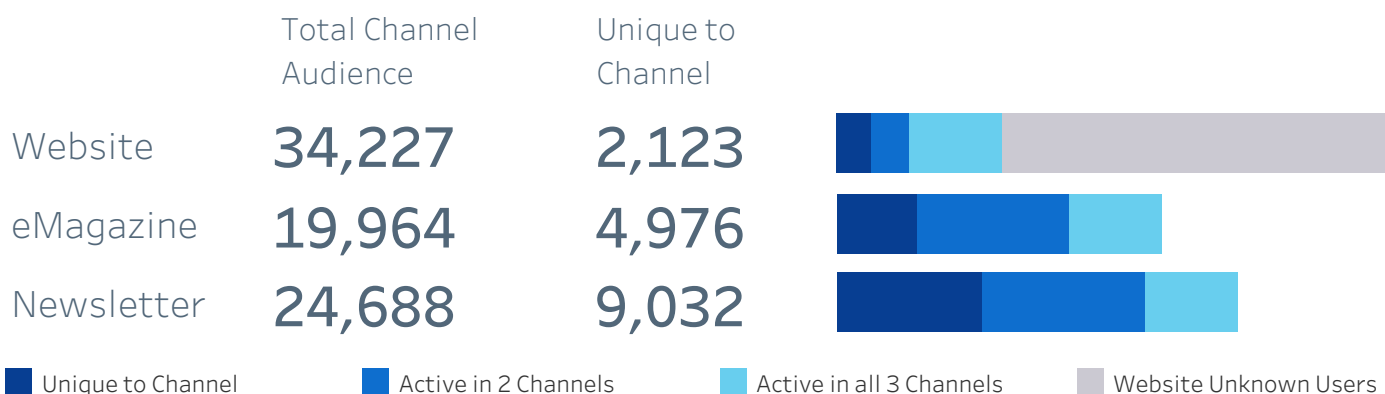
Total Audience

180,573
Total Audience Reach

37,426
Unique Active Audience

77%
Engaged

Core Channels



Additional Channels

305
Webinar Average Registrants

97
Unique Event Registrants

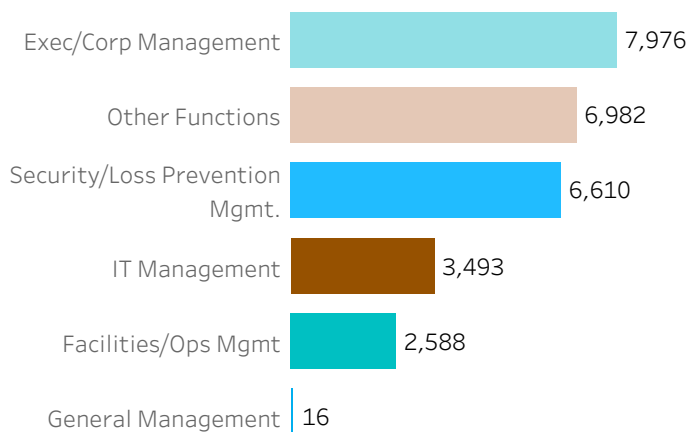
15,457
Standard eBlast Delivery

101,694
Social Media Total Followers

Demographics

Job Function

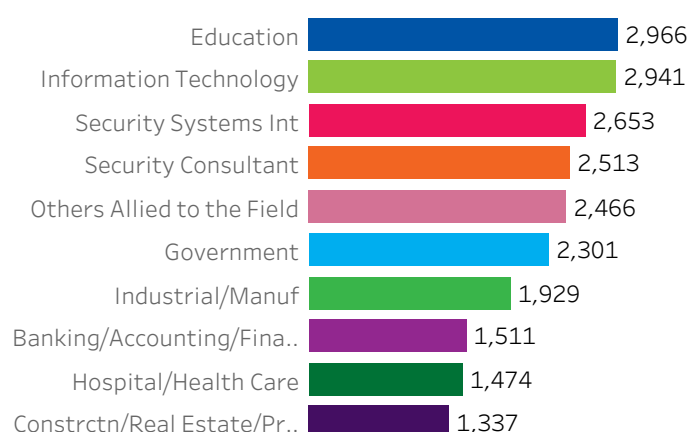
Top 6 shown



27,665 responses

Business Industry

Top 10 shown



27,763 responses



Audience Profile Glossary

UNDERSTANDING AUDIENCE PROFILE DASHBOARD

Time Frame - As of Last day of Month shown

- **Total Audience:**
Total Audience Reach: Reflects the combined exposure across Website, Newsletter, Social Media Followers, and eMagazine channels. Counts are cumulative and may include overlap between platforms. Only where applicable, also includes Continuing Education user counts.
- **Unique Active Audience:** Number of unique active customers with known first-party data active within product specific time frames for all products.
Engaged: Number of engaged customers with known first-party data within product specific time frames for all products.
** Product-specific time frames for each Channel may be found in Table A.*

Core Channels

The three core channels are Website, Newsletter, and eMagazine.

- **Total Channel Audience:** Total number of customers for specified product.
- **Unique to Channel:** Number of unique customers active only in specified channel.
- **Active in 2 Channels:** Number of unique customers active in two channels. Examples: A customer is active within Website and Newsletter channels but not eMagazine. Or a customer is active within Newsletter and eMagazine channels but not the Website.
- **Active in all 3 Channels:** Number of unique customers active in all three channels.
- **Website Unknown Users:** Number of total users who visited the website within the specified time frame who are not accounted for in the BNP Media database. The number of Unique Website Users may be higher than shown due to the number of unknown users.

Additional Channels

Additional channels may include Webinars, Events, Continuing Education (CE), eBlast, Social Media.

- **Webinar Average Registrants (if applicable):** Average registrants per webinar.
- **Unique Event Registrants (if applicable):** Average registrants per event.
- **CE Active Registered Users (if applicable):** Total active registered users for the Continuing Education Center.
- **Standard eBlast Delivery (sponsored only):** Delivery count of a typical eBlast within the last 3 months.
- **Social Media Total Followers (if applicable):** Follower counts by channel for the most recent month.

Demographics

- **Job Function:** Top job functions of the Unique Active Audience.
- **Business Industry:** Top business industries of the Unique Active Audience.

Table A

* BNP Media uses a proprietary algorithm to calculate the number of active and engaged users for each channel based on the time frames listed in the table below.

	Active Criteria	Engaged Criteria
Website	6 Months	6 Months
Newsletter	Included in most recent list	6 Months
eMagazine	Included in most recent list	12 Months
Webinar	12 Months	18 Months
Event	18 Months	18 Months
Continuing Education	13 Months	13 Months
eBlast	Included in most recent list	6 Months



eMagazine - Summary



Total Subscribers

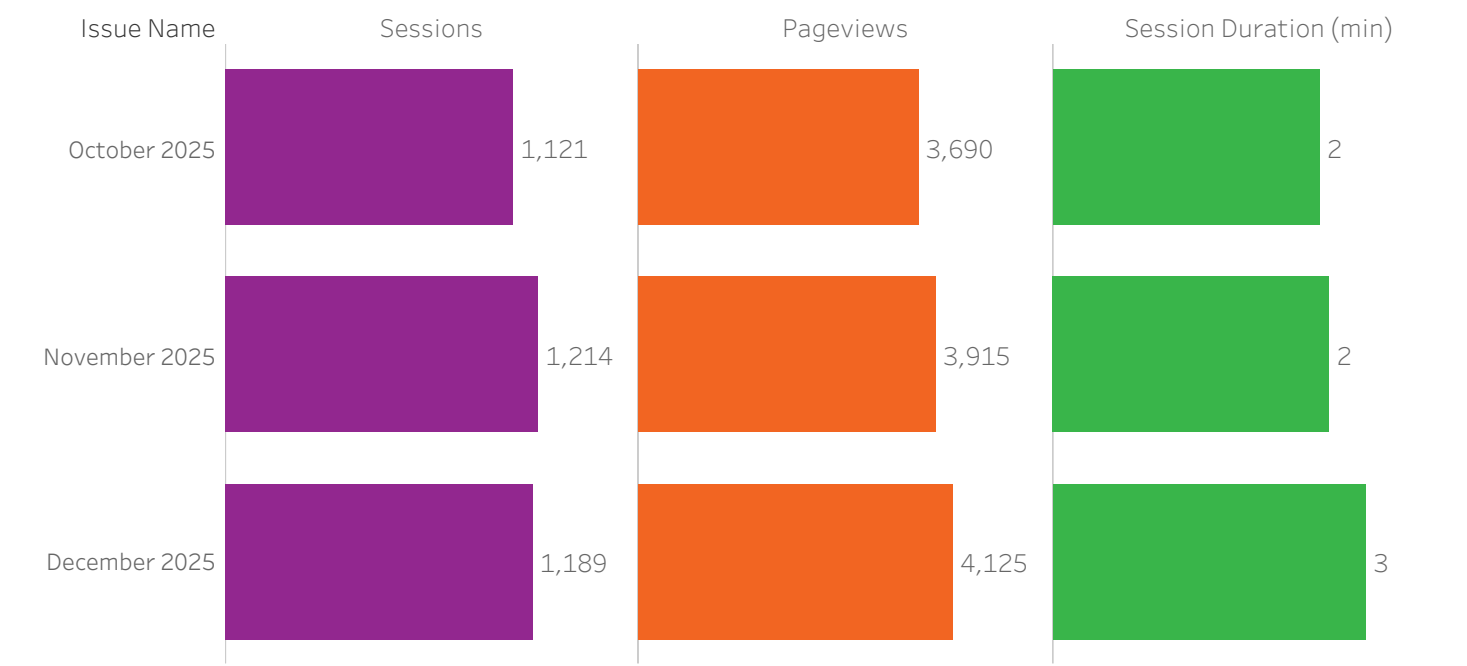
17,569



Average Issue Pageviews

3,910

Activity by eMagazine Issue



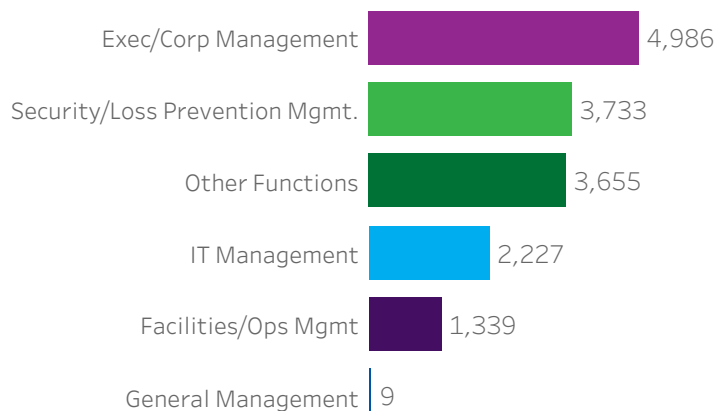
eMagazine Notification Email Metrics

Issue Name	Sends	Unique Delivered	* Unique Opens	* Open Rate	Total Clicks	CTR
October 2025	4	19,365	7,804	40.3%	482	1.3%
November 2025	4	18,797	7,562	40.2%	485	1.3%
December 2025	4	18,330	7,064	38.5%	469	1.3%

* Due to Apple Mail Privacy enabled on user devices, open rates may be inflated as of November 2021. Clicks are not impacted.

**eMagazine** - Subscriber Demographics & Locations**Demographic - Job Function**

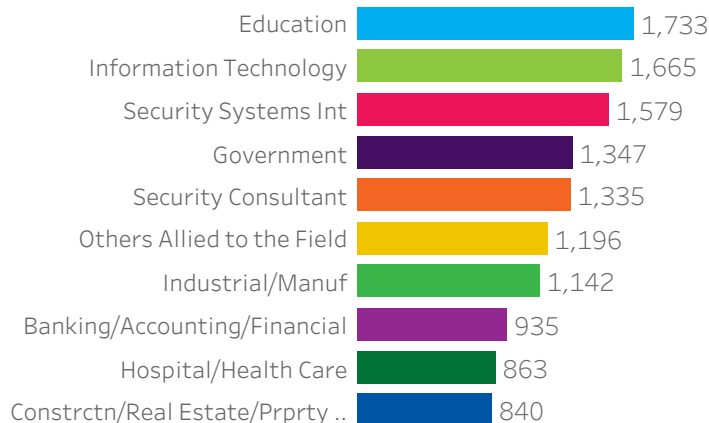
Top 6 Shown



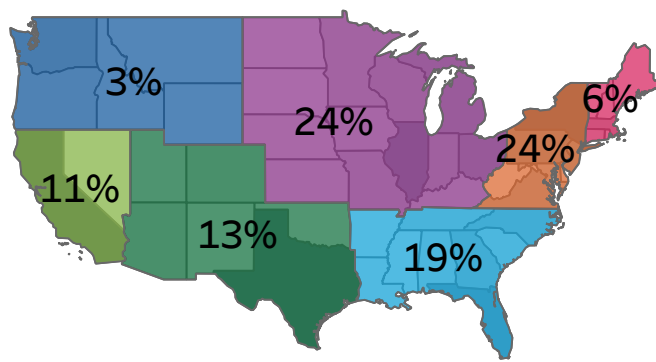
15,949 or 91% of subscribers with responses

Demographic - Business/Industry

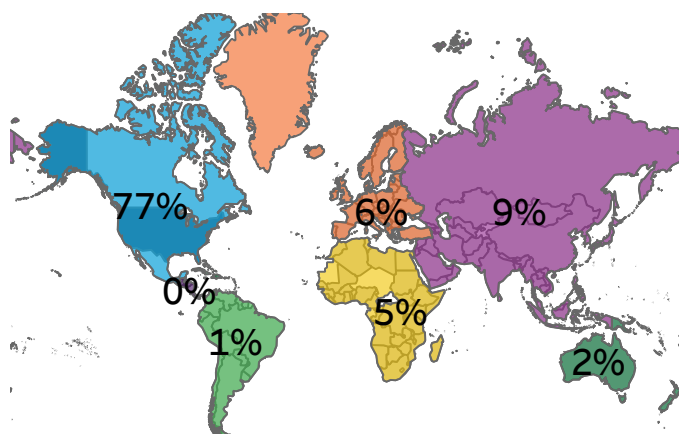
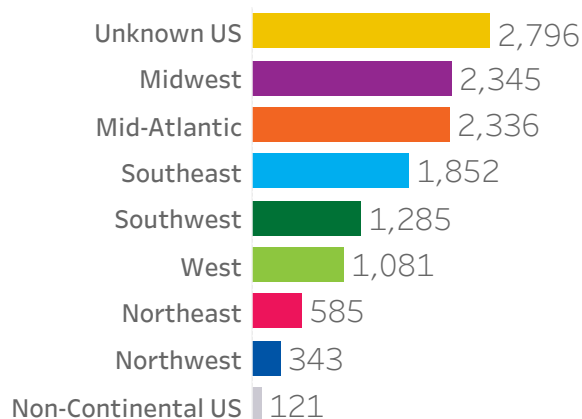
Top 10 Shown



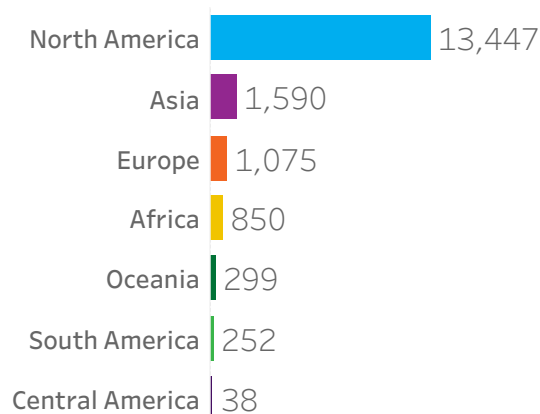
16,018 or 91% of subscribers with responses



73% of subscribers are located in the US

Unique Subscribers by Region

27% of subscribers are located internationally

Unique Subscribers by Region



Time Frame

3 months

KPIs

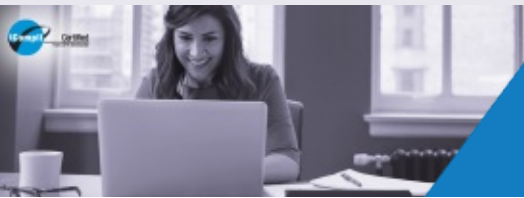
- **Total Qualified Subscribers:** Active digital subscribers as of the most recent issue.
- **Average Issue Pageviews:** The average monthly pageviews on the eMagazines.

Activity by eMagazine Issue

- **Issue Date:** eMagazine issue date.
- **Sessions:** Number of times users interacted with the eMagazine. Sessions are terminated after 30 minutes of inactivity.
- **Session Duration (min):** The average session length.
- **Pageviews:** The total number of eMagazine pageviews.

eMagazine Notification Email Metrics

- **Monthly Sends:** Total number of notification emails deployed per issue.
- **Delivered:** Number of unique email subscriber addresses eMagazine notification emails were delivered to for this issue.
- **Unique Opens:** Number of unique subscriber email addresses who opened any notification email for this issue.
- **Open Rate:** Ratio of unique Opens to Delivered.
- **Total Clicks:** Number of subscribers who clicked a link within a particular notification email.
- **CTR:** Click Through Rate is the percentage of subscribers who click on a link within the notification email.



Newsletters



Active Unique Recipients

24,688



% of Recipients Engaged

67%



Sends per Month

4

Recipient Activity by Newsletter Over the Last 3 Months

Newsletter Name	Average Delivered	
Security Newsletter	20,692	<div><div></div><div></div><div></div></div> <div>8,264 * Unique Opens - Single Send Avg (40%) 12,899 * Total Engaged Recipients (63%)</div>
Today's Systems Integrator	11,410	<div><div></div><div></div><div></div></div> <div>4,795 * Unique Opens - Single Send Avg (42%) 6,635 * Total Engaged Recipients (59%)</div>
Today's Cybersecurity Leader	9,792	<div><div></div><div></div><div></div></div> <div>3,945 * Unique Opens - Single Send Avg (40%) 5,381 * Total Engaged Recipients (56%)</div>

Engaged Recipient: Any recipient who opened at least one email of this type in the report time frame.

Unique Opens - Single Send Avg Unique Opens - All Sends Delivered

Newsletter Activity Averages

Newsletter Name	Monthly Sends	Delivered	* Unique Opens	* Open Rate	Total Clicks	CTR
Security Newsletter	2.0	20,692	8,264	39.9%	384	1.9%
Today's Systems Integrator	1.0	11,410	4,795	42.0%	233	2.0%
Today's Cybersecurity Leader	1.0	9,792	3,945	40.3%	146	1.5%

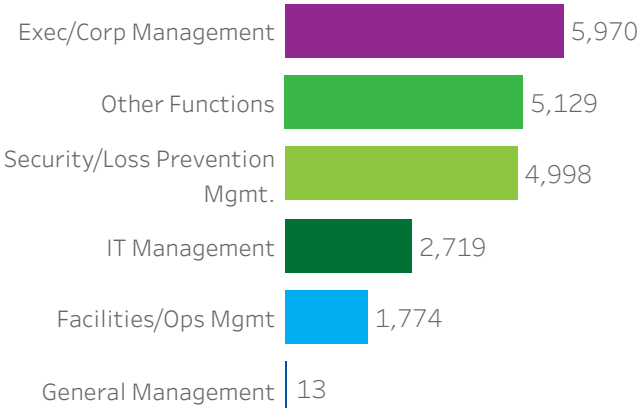
* Due to Apple Mail Privacy enabled on user devices, open rates may be inflated as of November 2021. Clicks are not impacted.



Newsletters - Recipient Demographics & Locations

Demographic - Job Function

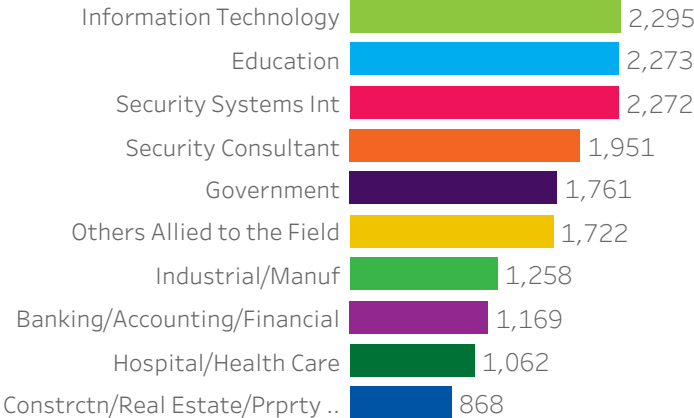
Top 6 Shown



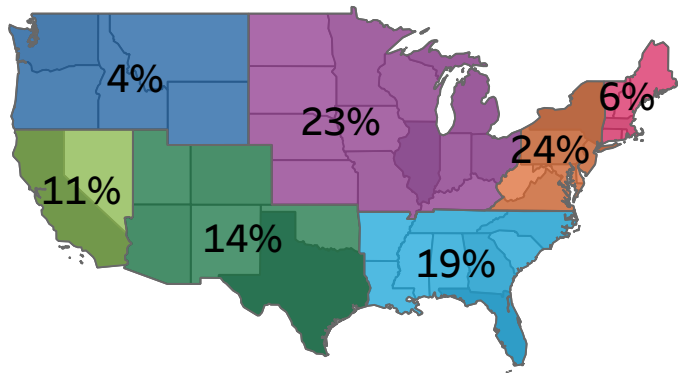
20,603 recipients with responses

Demographic - Business/Industry

Top 10 Shown

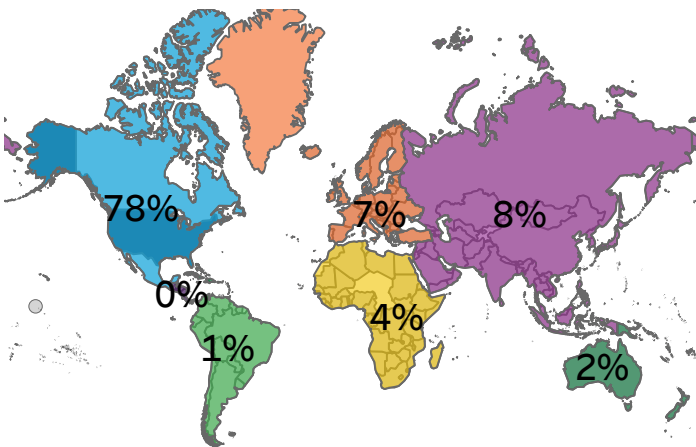
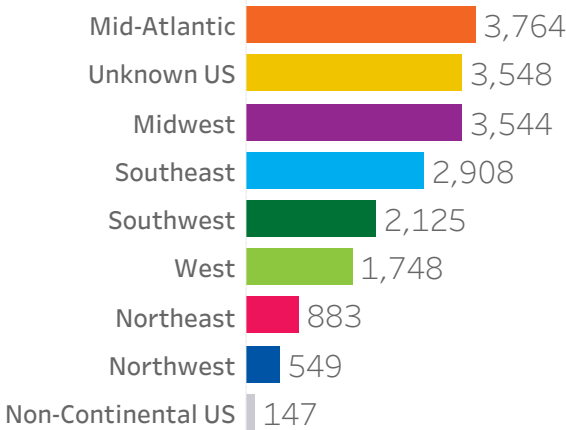


20,809 recipients with responses



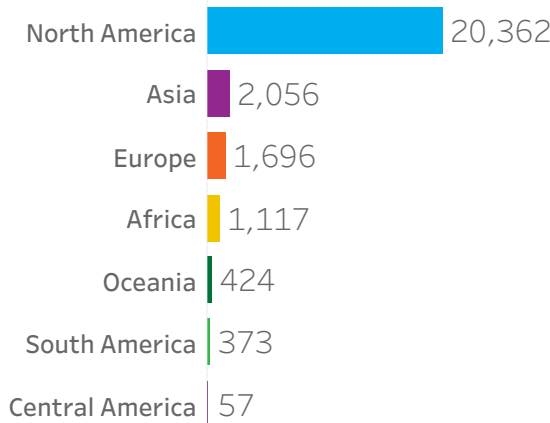
74% of recipients are located in the US

Unique Recipients by Region



26% of recipients are located internationally

Unique Recipients by Region





Newsletter Audience Glossary

UNDERSTANDING NEWSLETTER AUDIENCE DASHBOARD

Time Frame

3 Months

KPIs

- **Active Unique Recipients:** Number of unique email addresses that received any brand Newsletter in the 3-month period.
- **% of Recipients Engaged:** Percent of recipients who opened* any Newsletter.
- **Sends / Month:** Total Newsletters sent per month.

Recipient Activity by Newsletter

- **Average Delivered:** The average number of emails delivered per Newsletter.
- **Unique Opens, Single Send Avg:** Average unique opens* (uniqueness calculated for each email sent) for all emails sent.
- **Total Engaged Recipients:** Number of unique Recipients who have opened* one or more of the delivered emails.

Newsletter Activity Averages

- **Monthly Sends:** Total number of Newsletters deployed per month.
- **Delivered:** Average number of eMails, per Newsletter, deployed per month.
- **Unique Opens:** Average number of unique Recipients (delivered) who opened* a particular Newsletter.
- **Open Rate:** The ratio of Unique Opens* to Delivered.
- **Total Clicks:** Average number of recipients who clicked a link within a particular Newsletter.
- **CTR:** Click Through Rate is the percentage of recipients who click on a link within the Newsletter.

**Due to Apple Mail Privacy enabled on user devices, opens/open rates may be inflated as of November 2021. Clicks are not impacted.*



Website - www.securitymagazine.com



Average Monthly
Users

36,580



Average Monthly
Sessions

44,013



Average Monthly
Pageviews

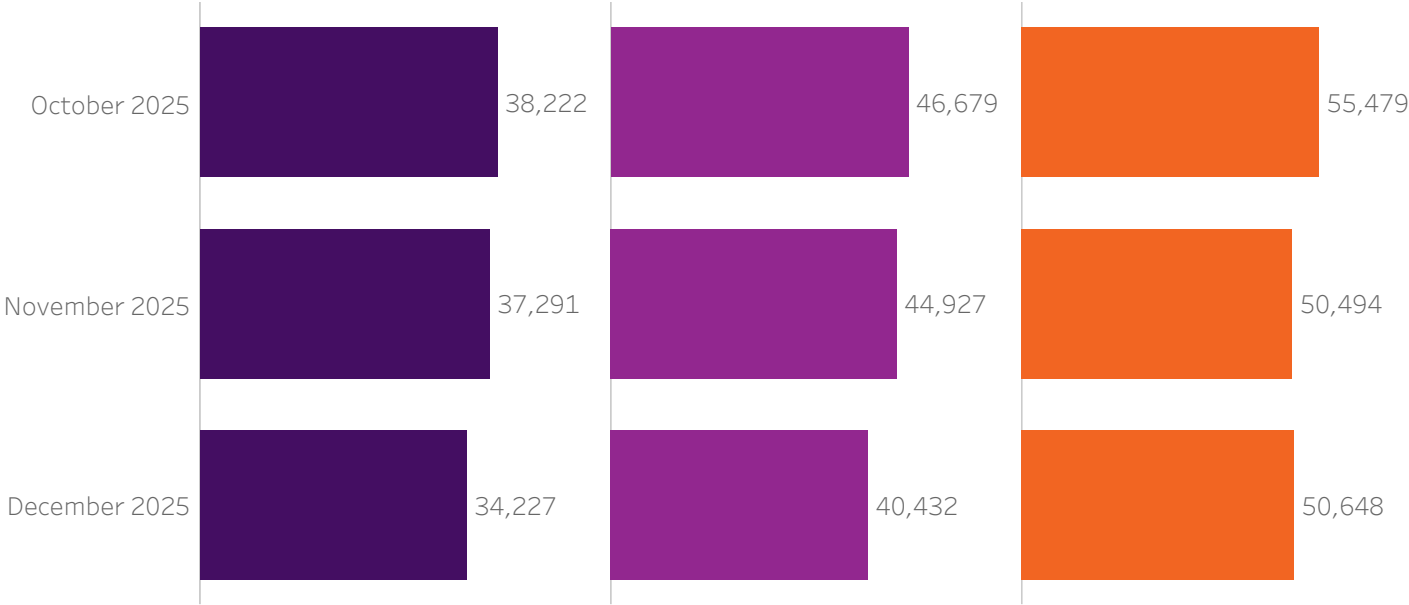
52,207

Monthly Website Statistics

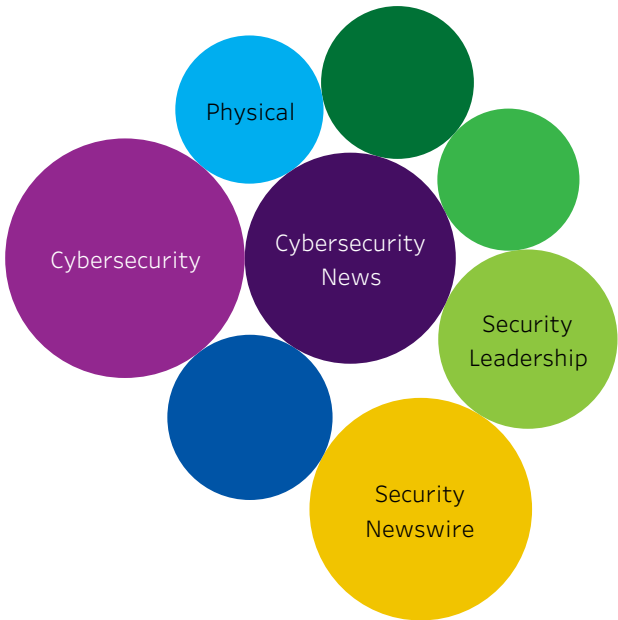
Unique Users

Sessions

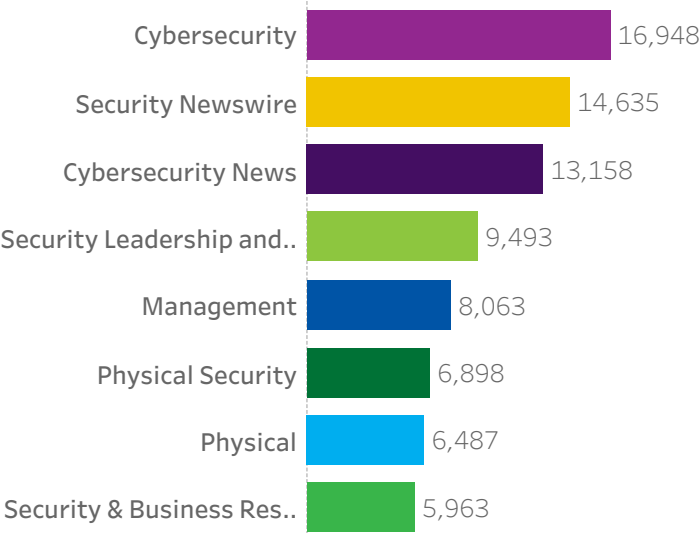
Pageviews



Top 8 Content Topics Viewed



Average Monthly Pageviews





Website - Known User Activity



Active Registered Users

2,711



Active Known Users

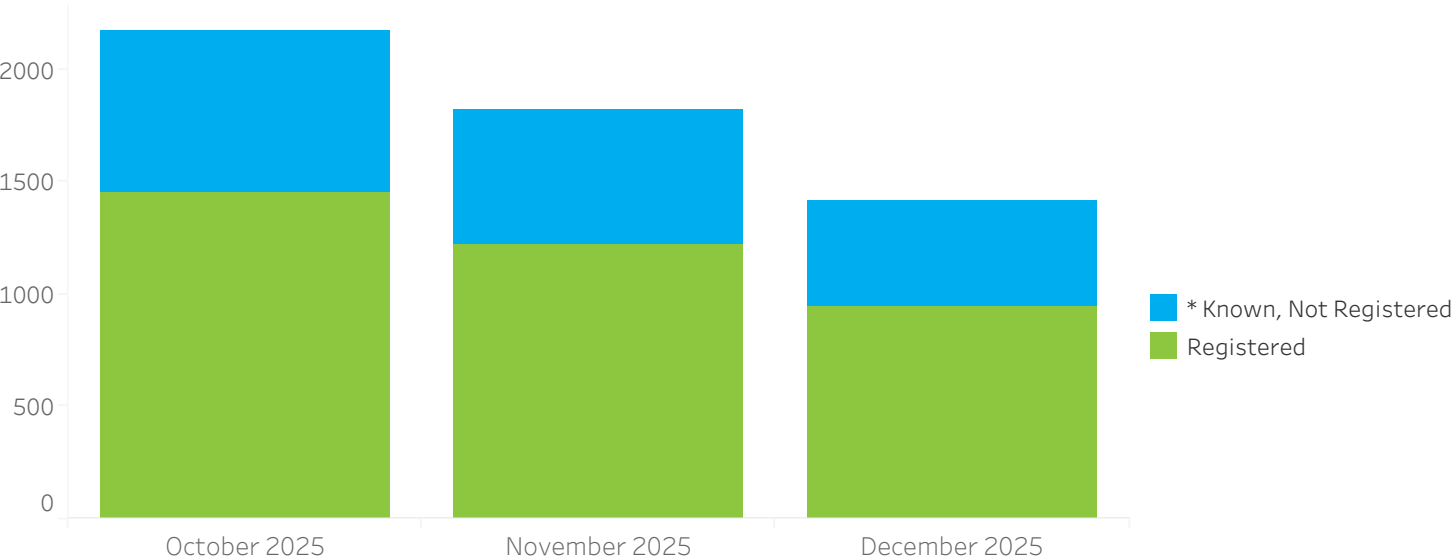
4,051



Average Visits per User

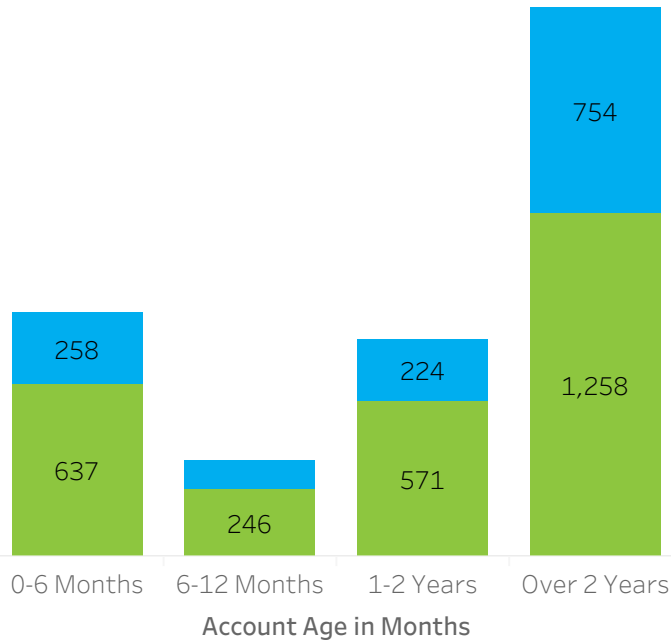
10.6

Website Users

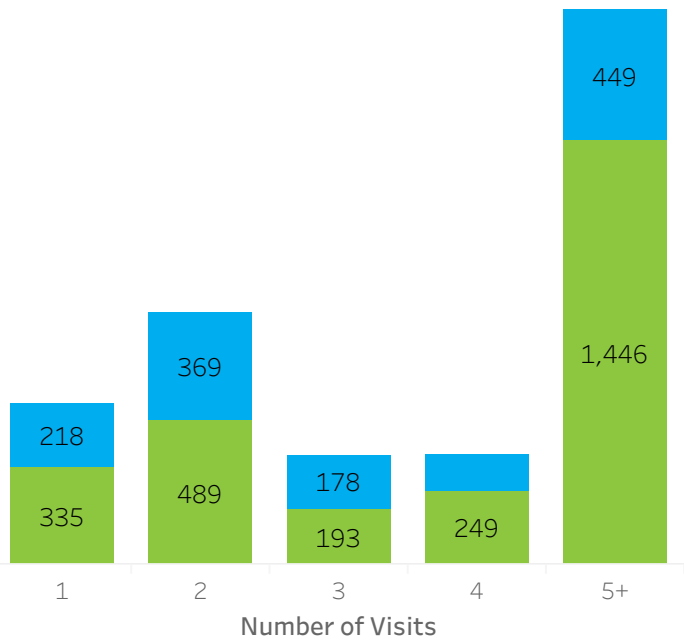


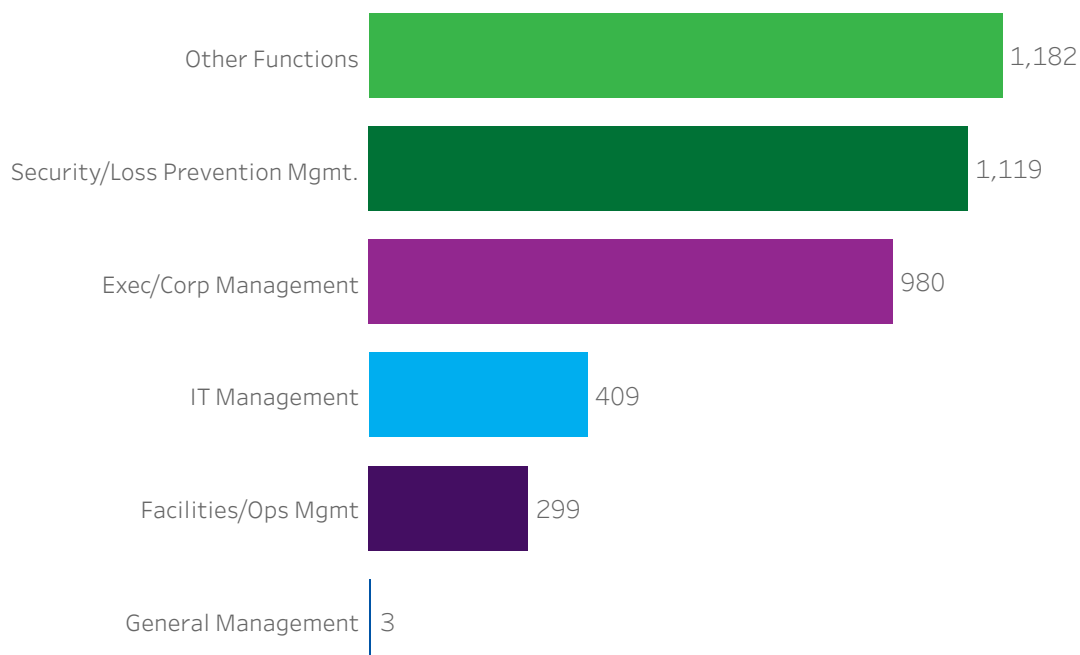
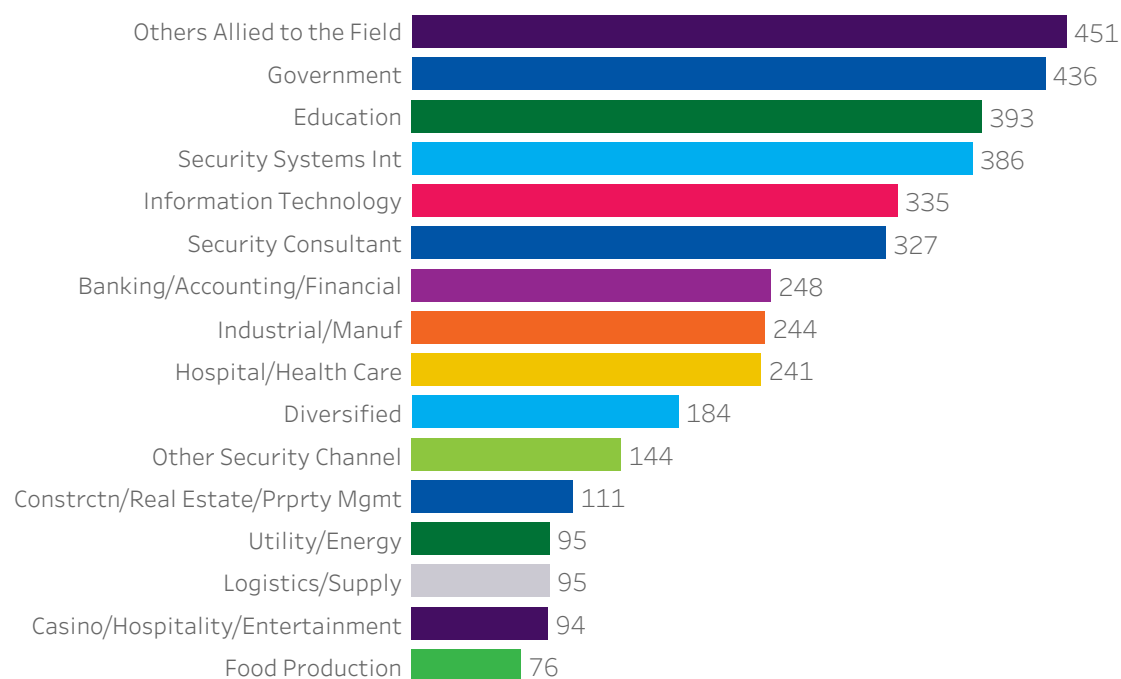
* Users that are identified in the BNP Media database but are not registered with this website

Known Users by Account Age



Known Users by Visit Frequency



**Website** - User Demographics**Demographic - Job Function** *Top 6 Shown**3,992 or 99% of users with responses***Demographic - Business/Industry** *Top 15 Shown**3,998 or 99% of users with responses*



Website - User Locations



% of Users Based in US

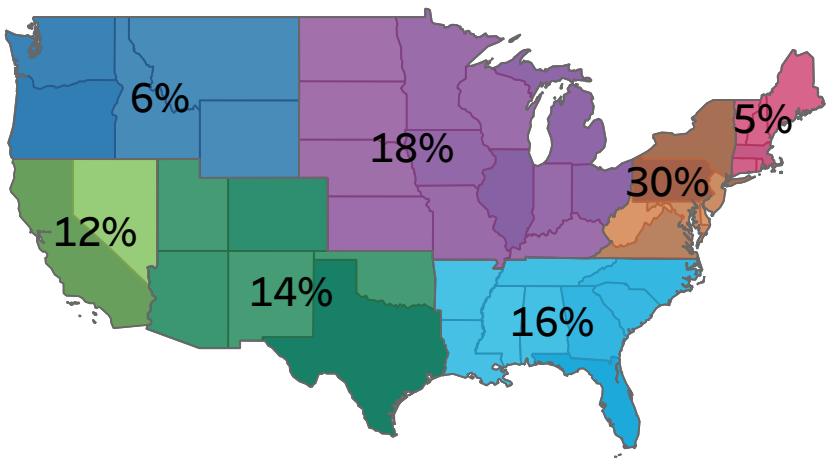
73%



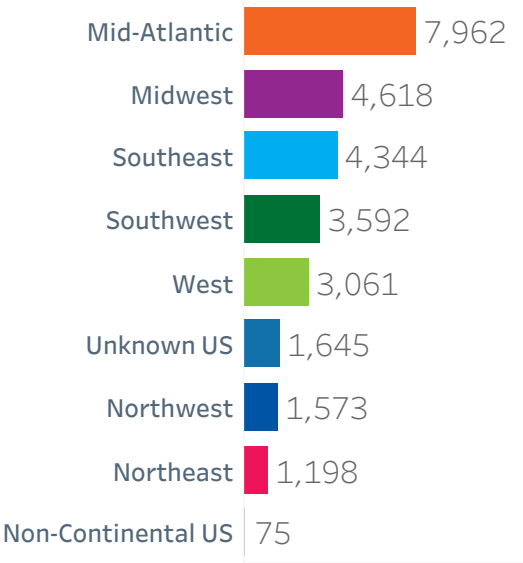
Average Monthly Users Based in US

28,068

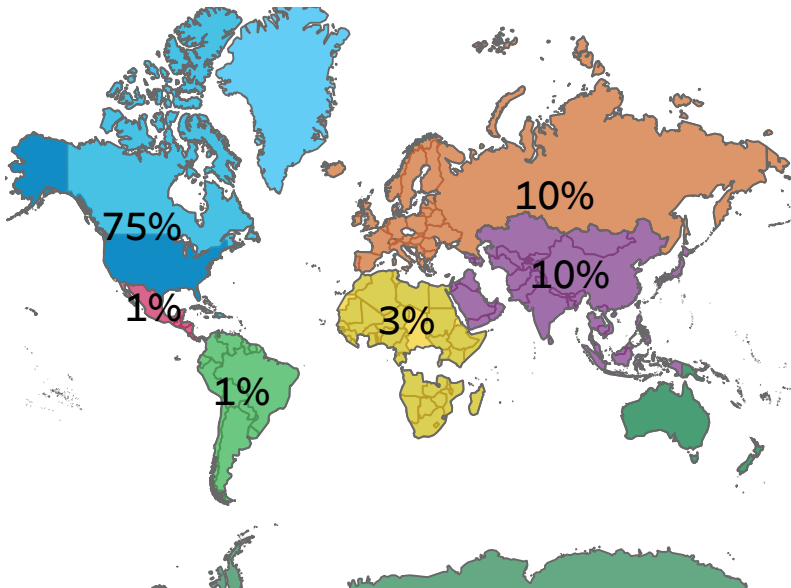
Geographic - US Regions



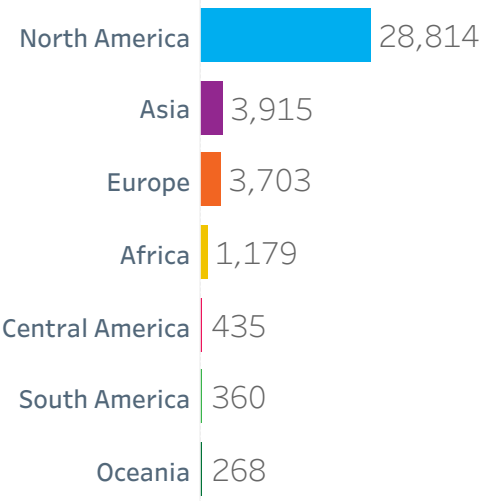
Unique Users by Region



Geographic - World Regions



Unique Users by Region





Time Frame

3-months

User Classifications

- **Registered:** Users that have completed the registration form for this website.
- **Known, Not Registered:** Users that are identified in the BNP Media database but are not registered with this website.

KPIs

- **Active Registered Users:** Number of unique users who registered on the website, at any time, and visited the website within the 3-month time frame.
- **Active Known Users:** Number of unique users with known first-party data, regardless of website registration status, who visited the website within the 3-month time frame.
- **Average Visits per User:** The ratio of visits, by known users, to the number of known users.

Web Users

- Number of users who were active on the website each month, colored by user classification.

Known Users by Account Age

- Number of users who visited the website within the 3-month time frame and have been in the BNP Media database for the account age listed, colored by user classification.

Known Users by Visit Frequency

- Number of times users visited the website within the 3-month time frame, colored by user classification.

Time Frame

3-months

KPIs

- **Average Monthly Users:** Average number of monthly users who have had at least one session on the website.
- **Average Monthly Sessions:** Average number of monthly sessions on the website. A session is anytime a user has interacted with the website.
- **Average Monthly Pageviews:** Average number of total monthly pageviews on the website.

Web Visitors

- **Users:** Number of Users per month.
- **Sessions:** Number of times users interacted with the digital edition. Sessions are terminated after 30 minutes of inactivity.
- **Pageviews:** Number of Pageviews per month.

Top 8 Content Topics

- Average monthly pageviews for the top 8 content topics on the website.



Sponsored eBlasts



Total Average Delivered

14,596

% of Recipients Engaged

66%

Sends per Month

7

Activity by eBlast

Sponsorship
Type

Avg
Delivered

Exclusive

14,596



4,713 * Unique Opens - Single Send Avg (32%)
11,846 * Total Engaged Subscribers (66%)

Engaged Subscriber: Any subscriber who opened at least one email of this type in the report time frame.

Unique Recipients

Unique Opens - Single Send Avg

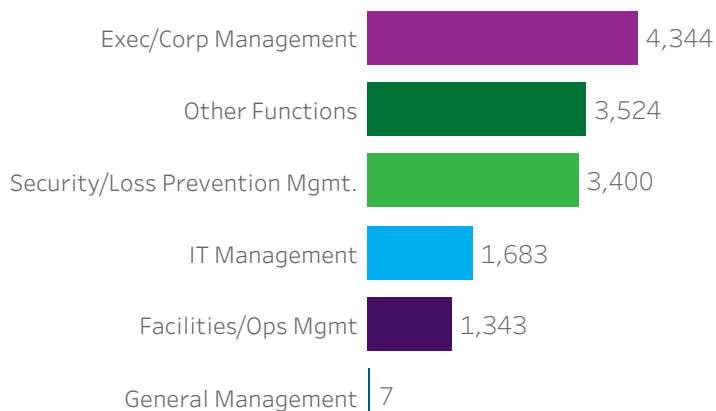
Unique Opens - All Sends

eBlast Activity Averages

eBlast Name	Sponsorship Type	Monthly Sends	Delivered	* Unique Opens	* Open Rate	Total Clicks	CTR
Security	Exclusive	7.3	14,596	4,713	32.3%	113	0.8%

**Sponsored eBlasts** - Recipient Demographics & Locations**Demographic - Job Function**

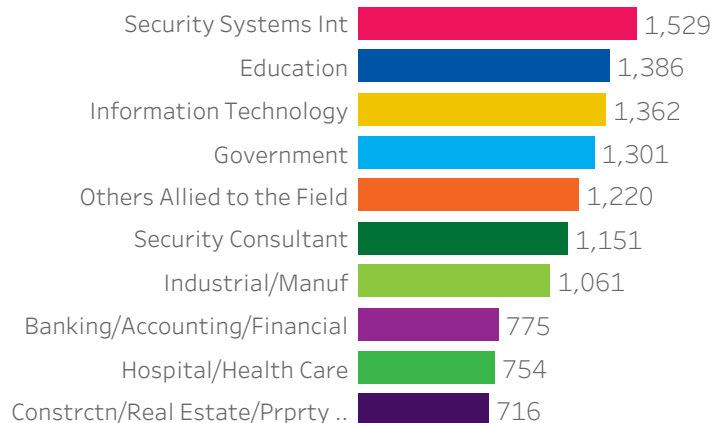
Top 6 Shown



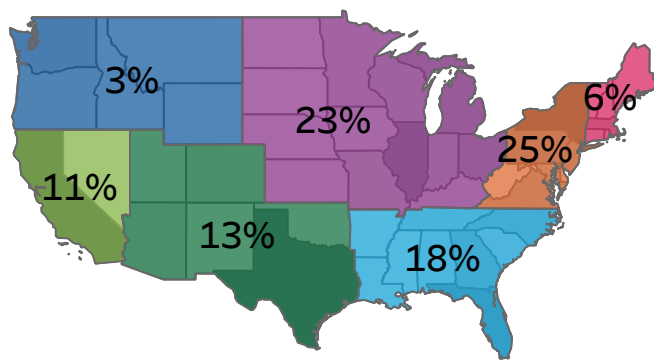
14,301 or 80% of recipients with responses

Demographic - Business/Industry

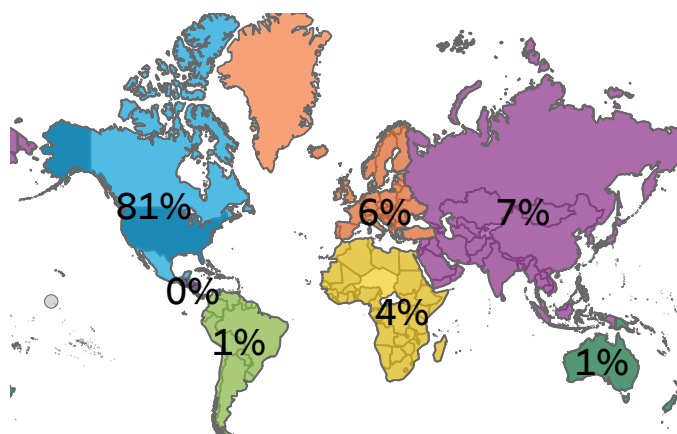
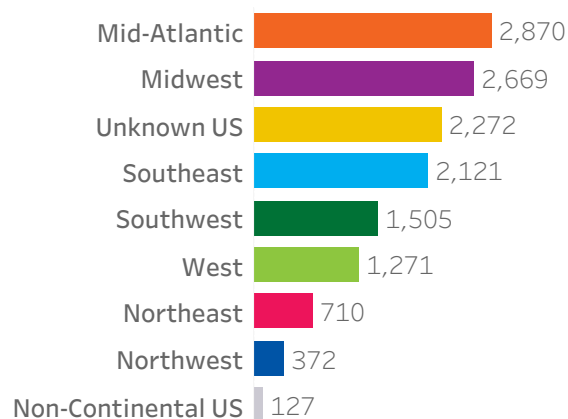
Top 10 Shown



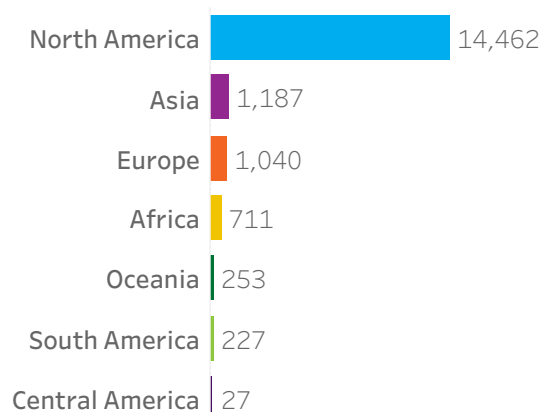
14,381 or 80% of recipients with responses



78% of recipients are located in the US

Unique Recipients by Region

22% of recipients are located internationally

Unique Recipients by Region

Time Frame

3 Months

KPIs

- **Total Average Delivered:** The number of eBlasts (Advertising emails) delivered, excluding bounces.
- **% of Recipients Engaged:** The percentage of recipients who have opened* an eBlast.
- **Sends per Month:** The average number of delivered Advertising eBlasts per month.

Activity by eBlast

- **Exclusive Sponsorship Type:** Single advertiser.
- **Multi-Sponsored Sponsorship Type:** Multiple advertisers.
- **Average Delivered:** The average number of emails delivered per eBlast.
- **Unique Opens, Single Send Avg:** The average unique opens* (uniqueness calculated for each email sent) for all emails sent.
- **Total Engaged Subscribers:** The number of unique recipients who have opened* one or more of the delivered emails.

eBlast Activity Averages

- **Monthly Sends:** Total number of eBlasts deployed per month.
- **Delivered:** Average number of eMails, per eBlast, deployed per month.
- **Unique Opens:** The average number of unique recipients (delivered) who opened* a particular eBlast.
- **Open Rate:** The ratio of Unique Opens* to Delivered.
- **Total Clicks:** Average number of recipients who clicked a link within a particular eBlast.
- **CTR:** Click Through Rate is the percentage of recipients who click on a link within the eBlast.

**Due to Apple Mail Privacy enabled on user devices, opens/open rates may be inflated as of November 2021. Clicks are not impacted.*



Social Media



Total Social Media Followers

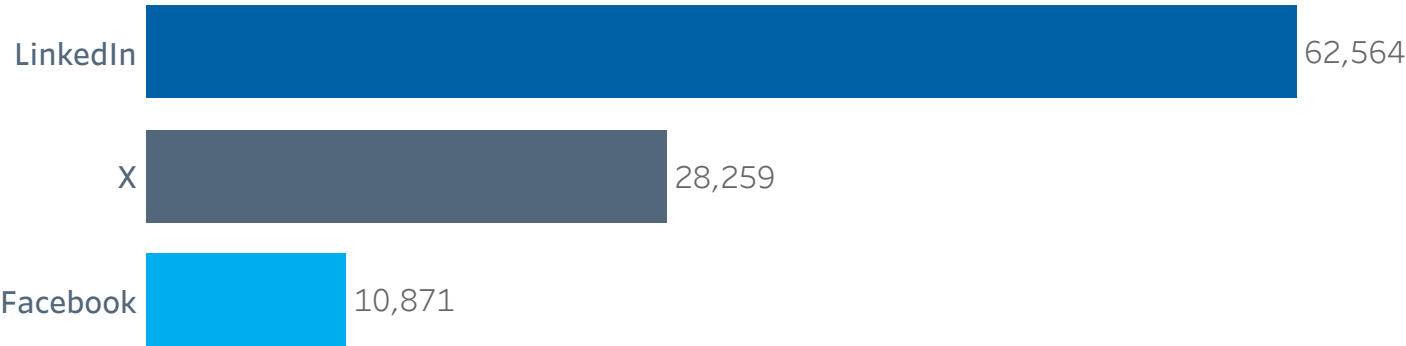
101,694



Engagements

2,232

Followers by Channel



Total Engagements



219

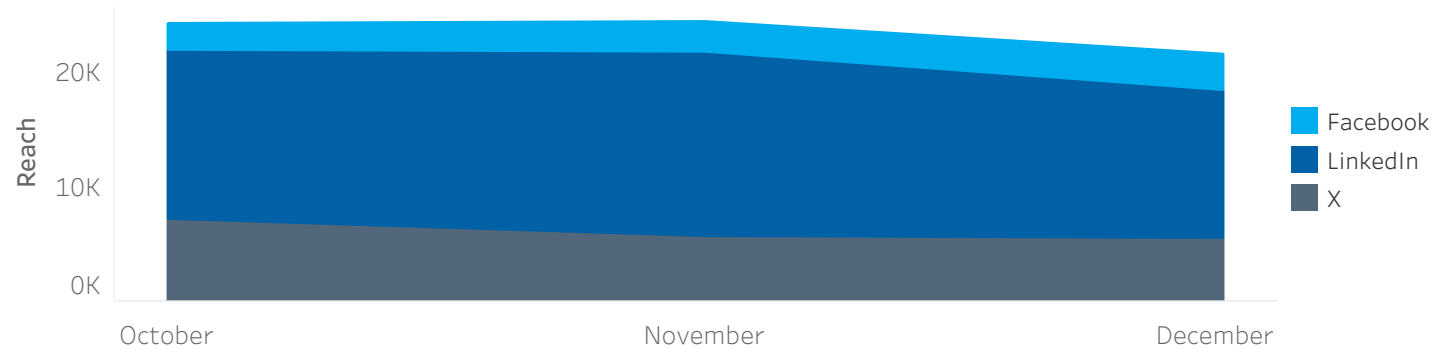


185



1,828

Reach by Month





Social Media Audience Glossary

UNDERSTANDING SOCIAL MEDIA AUDIENCE DASHBOARD

Time Frame

3 Months

KPIs

- **Total Social Media Followers:** The total number of social media followers per brand, as of the report date (not unique across all channels).
- **Engagements:** The reactions, comments, and shares on a post. Clicks are not included.

Followers by Channel

- Breakdown of followers by the specific social network.
- Followers is the total number who have followed the brand.

Total Engagements

- Total engagements by social network.

Reach by Month

- Breakdown by social network of the total reach by month.
- Reach is the number of individual users a post reached.



Events



Total Registrants

198



Total Events Annually

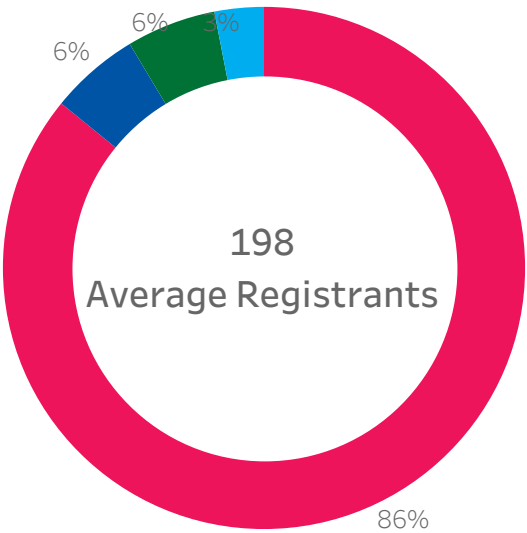
1



Average Registrants per Event

198

Registrant Types



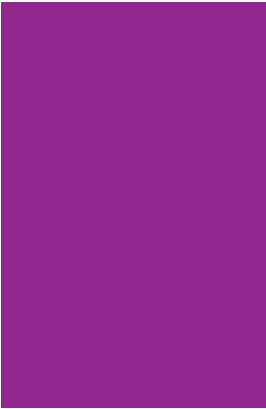
Attendee
Exhibitor/Sponsor

Speaker
Staff

Event Registration

Security 500

November 17, 2025



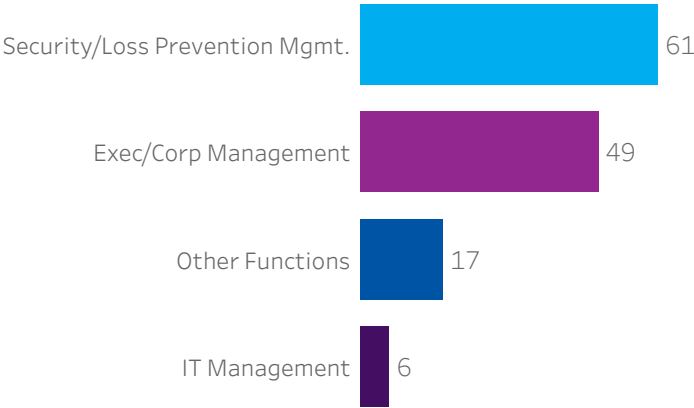
198 Registrants



Events - Registrant Demographics & Locations

Demographic - Job Function

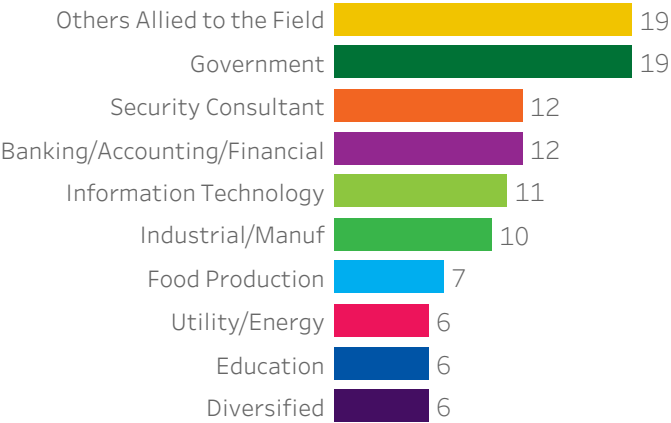
Top 4 Shown



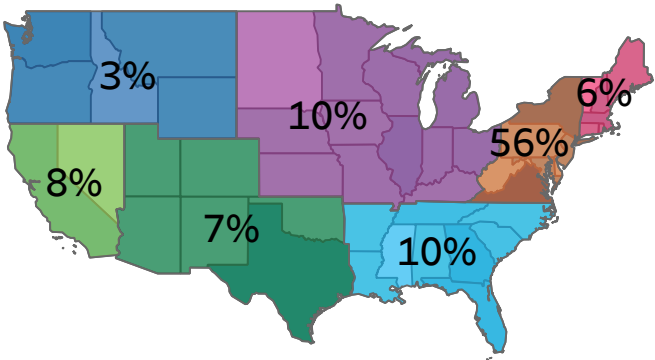
133 or 67% of registrants with responses

Demographic - Business/Industry

Top 10 Shown

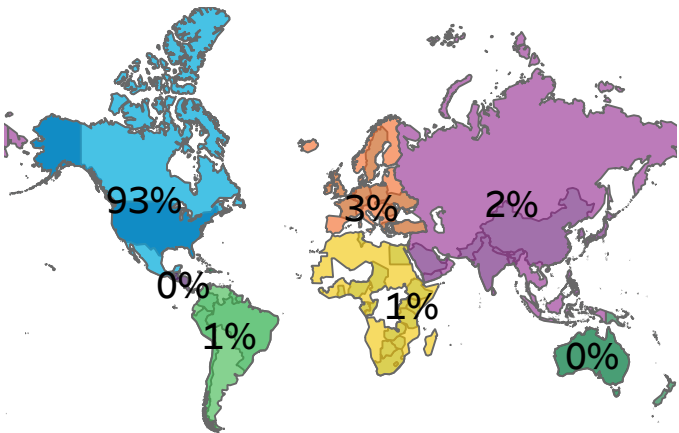
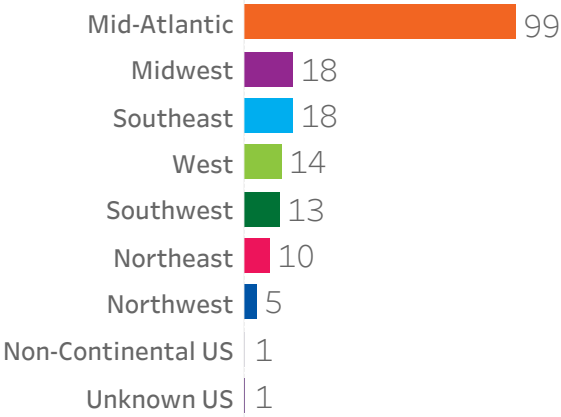


128 or 65% of registrants with responses



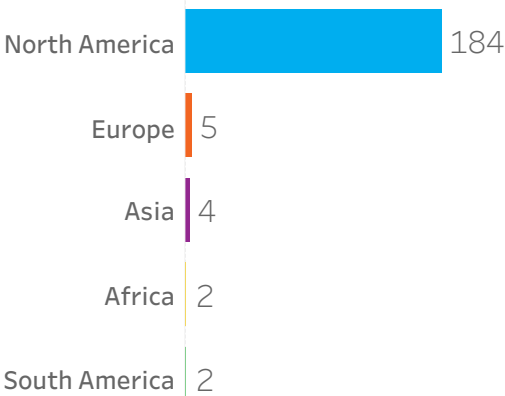
91% of registrants are located in the US

Unique Registrants by Region



9% of registrants are located internationally

Unique Registrants by Region





Time Frame

Annual

KPIs

- **Unique Registrant:** The number of unique registrants across all events.
- **Total Events Annually:** The number of events held annually per brand.
- **Average Registrants per Event:** The average number of registrants per event.

Registrant Types

- **Average Registrants:** Average number of registrants per event.
- **Attendee:** Average percentage of registrants who registered as an attendee only.
- **Speaker:** Average percentage of registrants who registered as a speaker.
- **Exhibitor/Sponsor:** Average percentage of registrants who registered as an exhibitor/sponsor.

Event Registration

- **Events:** Annual Events listed by date.
- **Registrants:** Total Registrants listed per Event.



Webinars



Unique Registrants

1,115



Unique Attendees

466



Registrant Attendance Rate

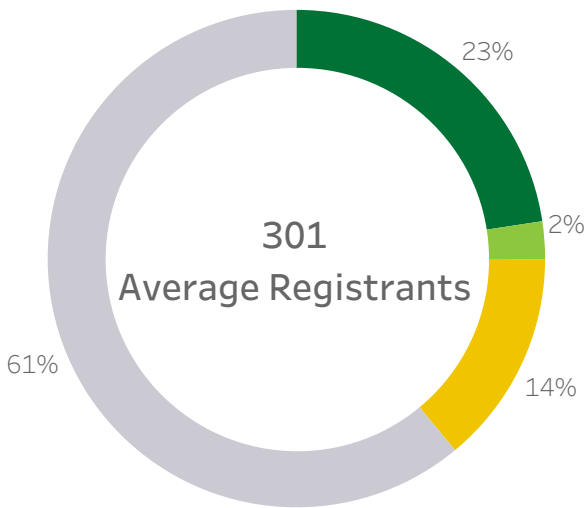
42%



Average Attendees per Webinar

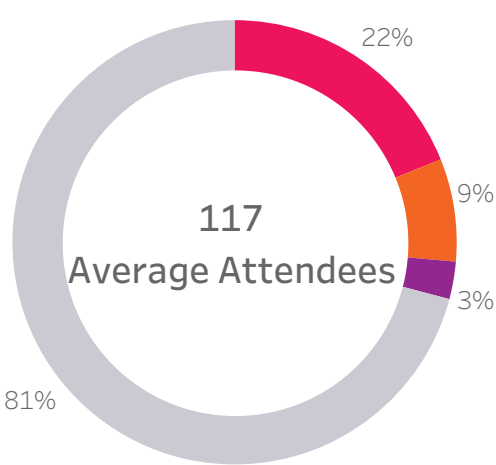
117

Registrant Breakdown



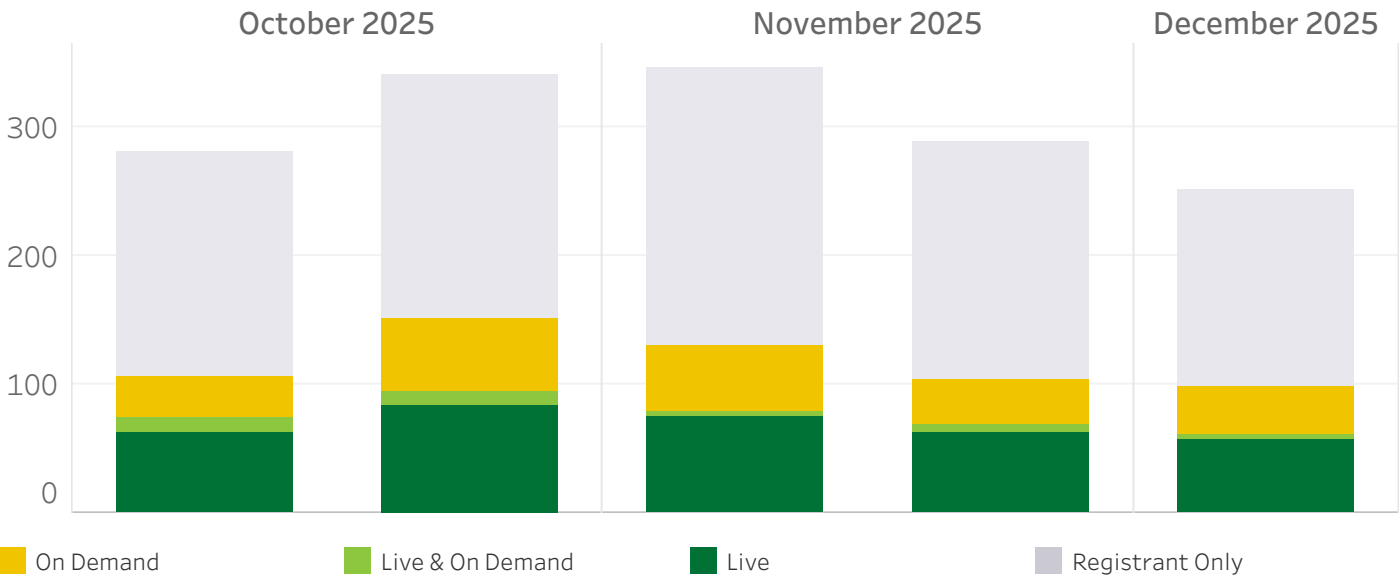
Live
On Demand
Live & On Demand
Registrant Only

Attendee Engagement Breakdown



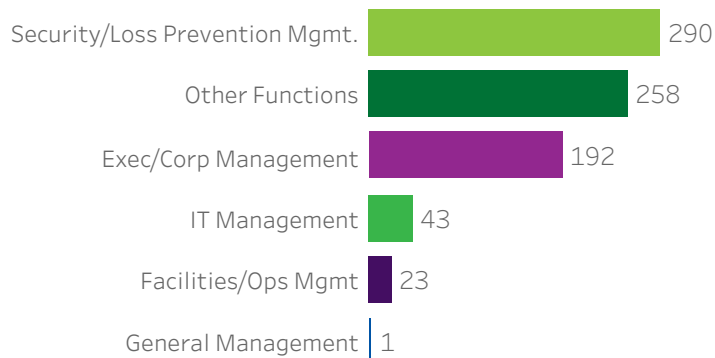
Answered Surveys
Repeat Viewer
Multiple Engagements
Viewed Only

Registration & Attendance Analysis



**Webinars - Registrant Demographics & Locations****Demographic - Job Function**

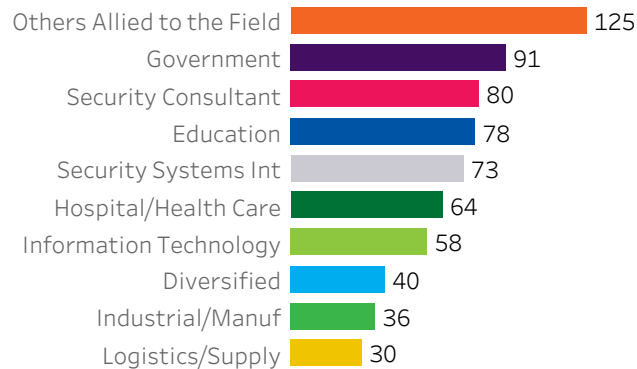
Top 6 Shown



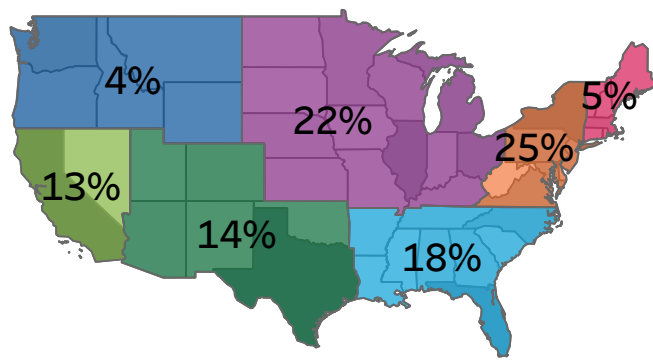
807 or 72% of registrants with responses

Demographic - Business/Industry

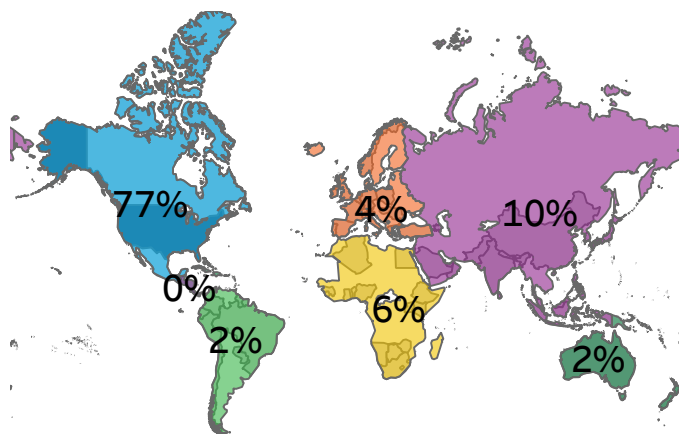
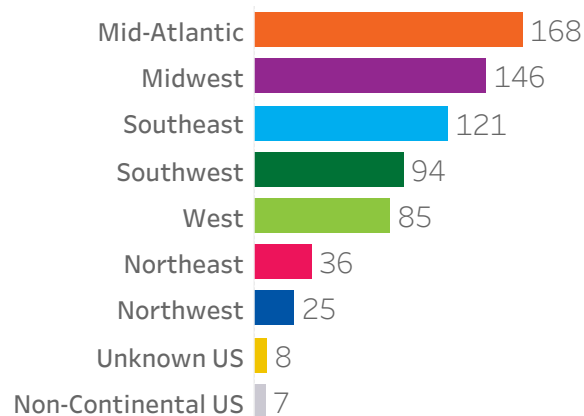
Top 10 Shown



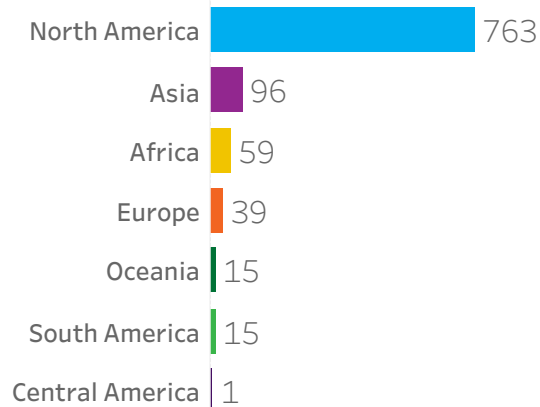
811 or 73% of registrants with responses



70% of registrants are located in the US

Unique Registrants by Region

30% of registrants are located internationally

Unique Registrants by Region

Time Frame

3 months. If there were less than 5 webinars in the most recent 3 months, the time frame is extended (up to 1 year) to include the 5 most recent webinars.

KPIs

- **Unique Registrants:** The number of unique registrants across all webinars.
- **Unique Attendees:** The number of unique attendees across all webinars.
- **Registrant Attendance Rate:** The ratio of average attendance to average registration.
- **Average Attendees per Webinar:** The average number of attendees per webinar.

Registrant Breakdown

- **Average Registrants:** The average number of registrants per webinar.
- **Registrant Only:** Percentage of average registrants who did not attend webinar.
- **Live:** Percentage of average registrants who attended the live webinar.
- **On Demand:** Percentage of average registrants who viewed the webinar at a later date than the live webinar.
- **Live & On Demand:** Percentage of average registrants who attended the webinar live and viewed the webinar at a later date.

Attendee Engagement Breakdown

- **Attendees:** Average number of attendees per webinar.
- **Answered a Survey:** Percent of average attendees who responded to a survey question within a webinar.
- **Downloaded Documents:** Percent of average attendees who downloaded a document within a webinar.
- **Multiple Engagements:** Percent of average attendees who responded more than once and/or in more than one way, within a webinar.
- **Repeat Viewer:** Percent of average attendees who viewed a webinar several times.
- **Answered Polls:** Percent of average attendees who responded to a poll question within a webinar.
- **Viewed Only:** Percent of average attendees who only viewed a webinar.

Registration & Attendance Analysis

- Number of unique registrants and attendees per webinar, colored by the type of viewing engagement.

Time Frame

See product specific glossary page

Demographic - Job Function

- Number of customers identified by Job Functions reported.

Demographic - Business/Industry

- Number of customers identified by Business & Industry reported.

Geographic - US Regions

- **Mid-Atlantic:** Delaware, Maryland, New Jersey, New York, Pennsylvania, Virginia, Washington D.C. and West Virginia
- **Midwest:** Indiana, Illinois, Wisconsin, Minnesota, Iowa, Kansas, Kentucky, Michigan, Missouri, Nebraska, North Dakota, Ohio and South Dakota
- **West:** California and Nevada
- **Southeast:** Alabama, Arkansas, Florida, Georgia, Louisiana, Mississippi, North Carolina, South Carolina and Tennessee
- **Southwest:** Arizona, Colorado, New Mexico, Oklahoma, Texas and Utah
- **Northeast:** Connecticut, Maine, Massachusetts, New Hampshire, Rhode Island and Vermont
- **Northwest:** Idaho, Montana, Oregon, Washington and Wyoming
- **Non-Continental US:** Alaska, American Samoa, APO/FPO, Guam, Hawaii, Northern Mariana Island, Puerto Rico and U.S. Virgin Islands

Geographic - World Regional

- **North America:** Canada, Mexico and U.S.A.
- **Asia:** Continent of Asia, including Asia minor and Middle East
- **Europe:** Continental European nations (including United Kingdom and Ireland)
- **Oceania:** Australia, New Zealand and surrounding Pacific Island nations
- **South America:** Continental South American nations
- **Africa:** Continental African nations
- **Central America:** Costa Rica, Guatemala, Honduras, Panama and Nicaragua

Audience Profile Glossary

DEMOGRAPHICS APPENDIX (JOB FUNCTION)

Display Name

Included Demographics

Exec/Corp Management

Executive or Corp Management

Facilities/Ops Mgmt

Facilities/Operations Mgmt

General Management

General Management

IT Management

IT Management

Other Functions

Architecture/Engineering

Consulting/Systems Integrator

Data Center Engineering

Data Center Operating

Installation/Service/System Design

Must Pay

Need More Information

Other

Sales Staff

Security/Loss Prevention Mgmt.

Security/Loss Prevent mgmt

Audience Profile Glossary

DEMOGRAPHICS APPENDIX (BUSINESS INDUSTRY)

Display Name

Included Demographics

Architecture/Engineer Firm

Architecture/Engineer Firm

Banking/Accounting/Financial

Banking/Accounting/Financial

Casino/Hospitality/Entertainment

Casino/Hospitality/Entertainment

Constrctn/Real Estate/Prprty Mgmt

Construction/Real Estate/Property Mgmt.

Diversified

Diversified

Education

Education

Education (K-12)

Education Univ/College

Food Production

Food Production

Government

Government

Local (County.Municipal)

State

Hospital/Health Care

Hospital/Health Care

Industrial/Manuf

Industrial/Manuf

Information Technology

Information Technology

Logistics/Supply

Logistics/Supply

Other Security Channel

Other Security Channel

Others Allied to the Field

Central Station Srvc (Non-Installing)

Manufacturer's Representative

Must Pay

Need More Information

Old Code BO

Old Code X2

Other

Security Installing Dealer

Security Installing Dealer with Co

Security Product Distributor

Security Products/Components Manuf

Security Service Company Installs

Value-Added Reseller/IT Install

Port/Mass Transit

Port/Mass Transit

Retail/Restaurant

Retail/Restaurant

Security Consultant

Security Consultant

Security Systems Int

Security Systems Int

Utility/Energy

Utility/Energy

BNP Customer Database - omeda.com

Primary source of record for all first party customer data and activities including: Subscriber Registrations, Demographics, Physical Addresses, Business & Job Function Demographic responses, Product Subscriptions, Email Deployments, Website Visits, eMagazine Visits, Digital Edition Visits.

*Usage by Report Section***Audience Profile**

- **Unique Active Customers**
- **Print Magazine, Digital Edition, eMagazine:** Subscriber Counts
- **Newsletter:** Recipients, Engagement, Sends
- **eBlasts:** Delivered, Engagement, Sends
- **Website:** Active Registrants
- **Demographics:** Job Functions & Business Industry mapped to consolidated categories as per *Demographic Mapping Reference*
- **Locations:** Locations of known customers with first party address data

Magazine/eMagazine

- **Magazine Summary:** All data
- **eMagazine/Digital Edition Summary:** Total Qualified Subscribers, Notification eMail Metrics
- **Demographics:** Job Functions & Business Industry mapped to consolidated categories as per *Demographic Mapping Reference*
- **Locations:** Locations of known customers with first party address data

eNewsletters

- **All Pages:** All data

Website

- **Known User Activity:** All data
- **User Demographics:** Job Functions & Business Industry mapped to consolidated categories as per *Demographic Mapping Reference*

eBlasts

- **All Pages:** All data

Continuing Education

- **Websites & Newsletter:** Newsletter Delivery, Activity by Newsletter
- **Demographics:** Job Functions & Business Industry mapped to consolidated categories as per *Demographic Mapping Reference*
- **Locations:** Locations of known customers with first party address data

Events

- **Demographics:** Job Functions & Business Industry mapped to consolidated categories as per *Demographic Mapping Reference*
- **Locations:** Locations of known customers with first party address data

Webinars

- **Demographics:** Job Functions & Business Industry mapped to consolidated categories as per *Demographic Mapping Reference*
- **Locations:** Locations of known customers with first party address data

Google Analytics - google.com/analytics

Web Analytics service offered by Google that tracks and reports website traffic. Used to track all usage (known & anonymous) across websites, eMagazines, Digital Editions, Continuing Education.

Usage by Report Section

Audience Profile

- **Website:** Average Monthly Users, Average Monthly Pageviews
- **Continuing Education:** Monthly Website Pageviews

eMagazine/Magazine

- **eMagazine/Digital Edition Summary:** Issue Pageviews, Sessions, Session Duration

Website

- **Website Overview:** Website Users, Sessions, Pageviews, Top Content Topics
- **User Locations:** Website User Locations

Continuing Education

- **Websites & Newsletter:** Monthly Website Pageviews, All Website Visitors data

Falcon Social Media Platform - falcon.io

Single platform management and analytics for Facebook, Twitter, Instagram, LinkedIn accounts. falcon.io

Usage by Report Section

Audience Profile

- **Social Media:** Follower Count by Channel



Audience Profile Appendix

DATA SOURCE REFERENCE (PAGE 3)

Social Media

- **All Pages:** All data

Building Media Inc. - buildingmedia.com

Developer of innovative online learning management programs and e-Learning courseware built exclusively for the construction community. Hosts and manages Continuing Education Centers.

Usage by Report Section

Audience Profile

- **Continuing Education:** Active Registered Users

Continuing Education

- **Websites & Newsletter:** Active Registered Users
- **CE Courses & Tests:** All data

Aventri - aventri.com

Event Management Platform used to process registration and administration of in person, virtual and hybrid events.

Usage by Report Section

Audience Profile

- **Events:** Average Attendees per Event

Events

- **Event Overview:** All data

Intrado - intrado.com

Webinar and interactive media platform. Technology and administration of Webinars.

Usage by Report Section

Audience Profile

- **Webinars:** Average Registrants, Average Attendees

Webinars

- **Webinars Overview:** All data